

# Cartography

Arboretum Area Transportation Study, Carver County, Minnesota



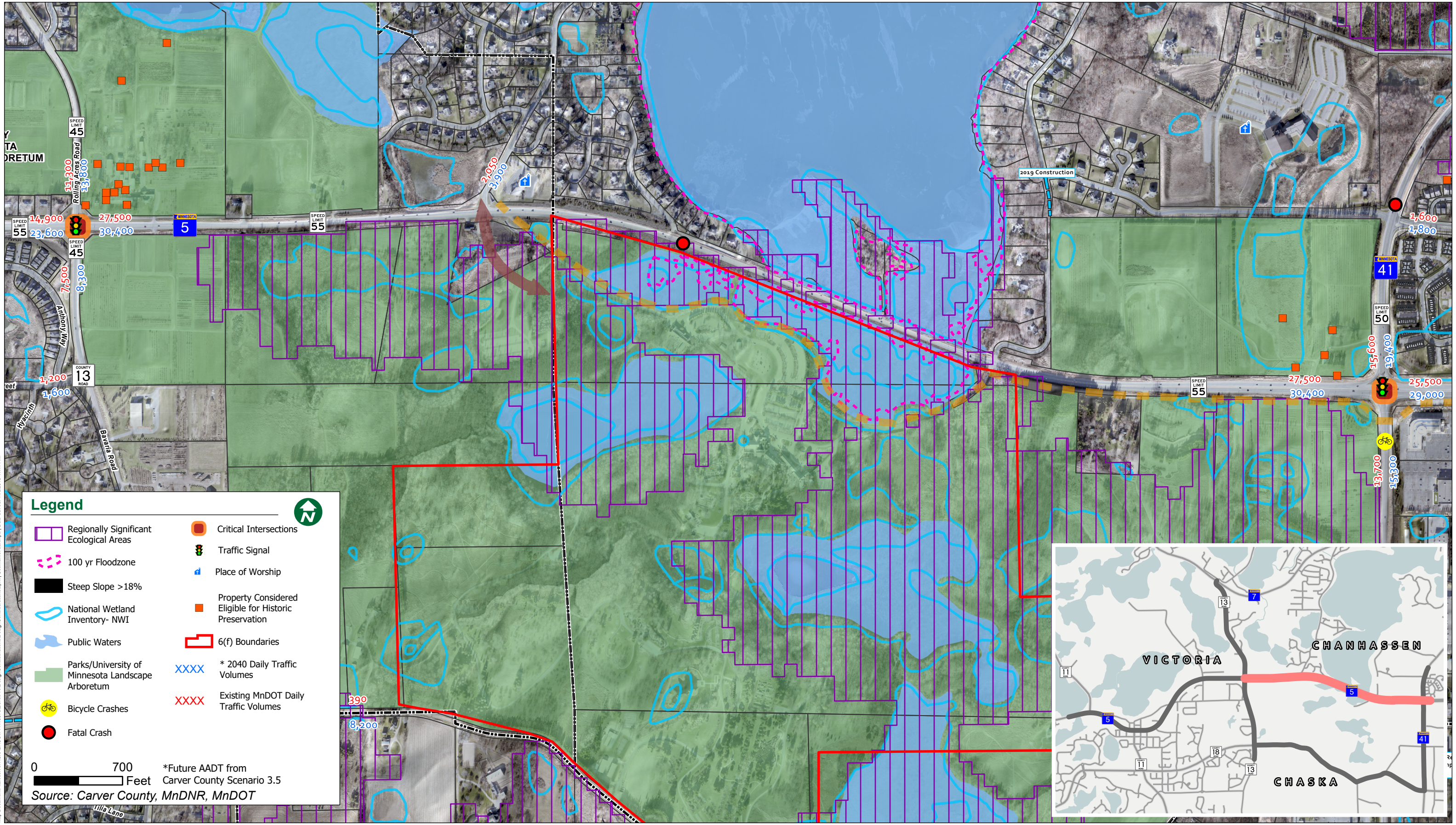
Real People. Real Solutions.

This subarea study is focused on identifying a vision for Highway 5 and the surrounding county highways in the Cities of Chaska, Chanhassen, and Victoria near the Minnesota Landscape Arboretum. The Bolton & Menk team has analyzed traffic operations and safety to determine appropriate options for future roadway sections and intersection treatments in this high growth area of the metro region. Using cartography and GIS tools in ArcGIS Pro, Bolton & Menk created a map series depicting existing and future conditions. All alternatives were evaluated against study criteria and have been vetted through an extensive public process utilizing Story Maps to present information virtually.

Our GIS specialists implemented new methods of online engagement for this project, as it transitioned from in-person to online halfway through the schedule. Our innovative and effective ideas included the use of online surveys, story maps, and Bolton & Menk's custom comment web mapping application INPUTiD™. The public engagement process has not skipped a beat and it still proceeding in an effective way. This study will be completed in late 2020.

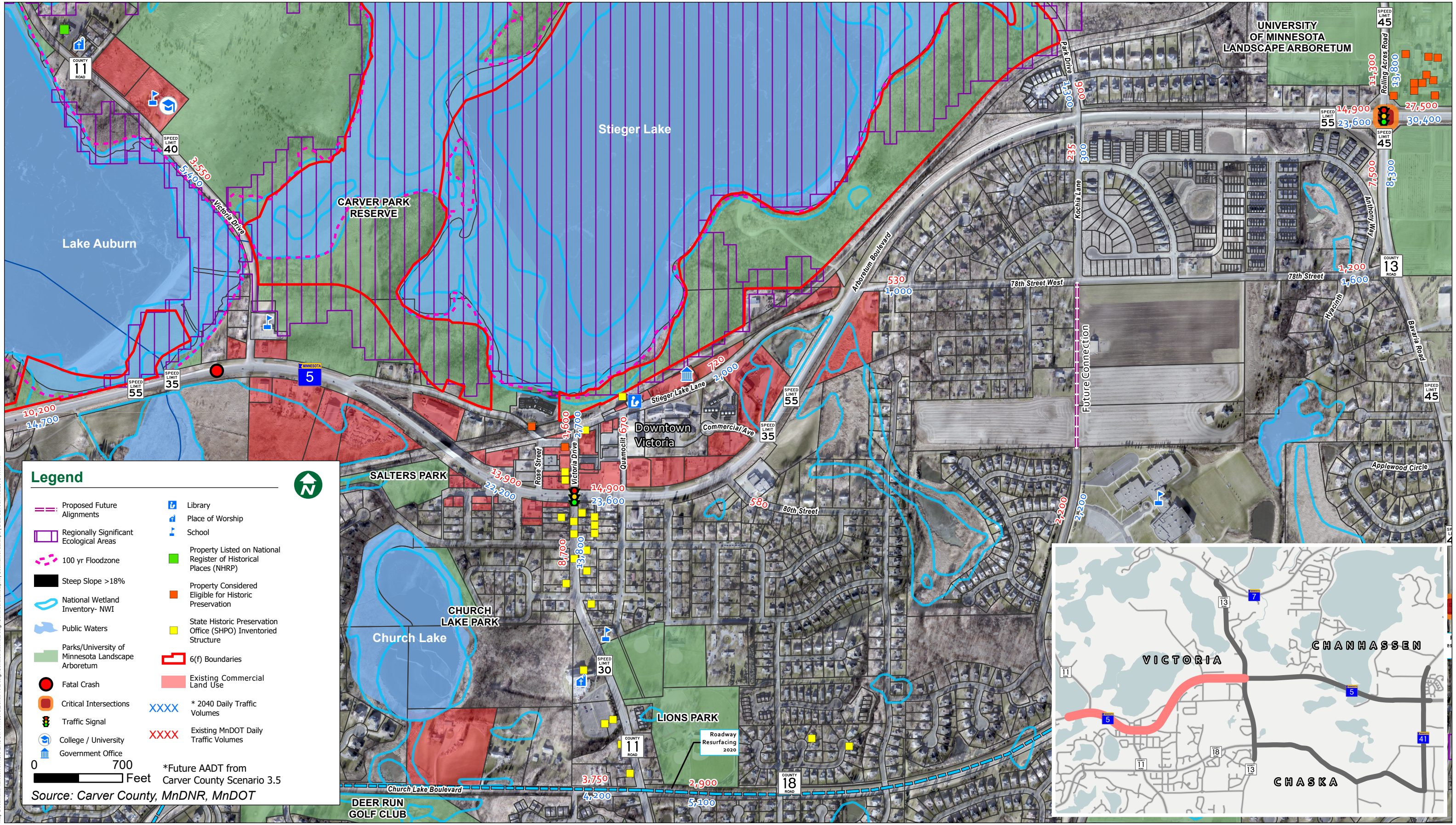
[Arboretum Area design considerations map series is included on the following pages.](#)





Map Document: \\arcserv1\GIS\CACOT\4118370E\SRV\Pro\DesignConsiderations\DesignConsiderations.aprx | Username: aaronpa | Date Saved: 11/15/2019 11:17 AM





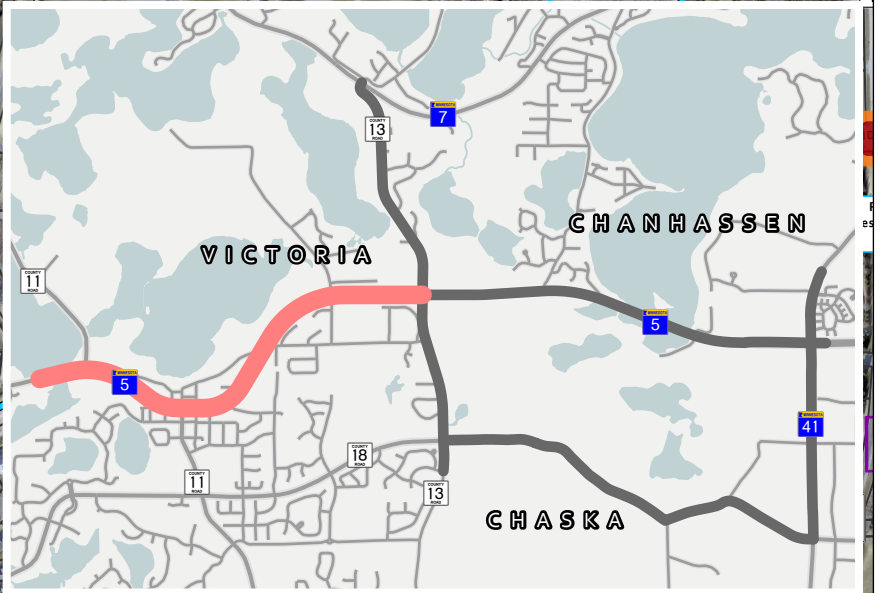
**Legend**

- Proposed Future Alignments
- Regionally Significant Ecological Areas
- 100 yr Floodzone
- Steep Slope >18%
- National Wetland Inventory- NWI
- Public Waters
- Parks/University of Minnesota Landscape Arboretum
- Fatal Crash
- Critical Intersections
- Traffic Signal
- College / University Government Office
- Library
- Place of Worship
- School
- Property Listed on National Register of Historical Places (NHRP)
- Property Considered Eligible for Historic Preservation
- State Historic Preservation Office (SHPO) Inventoried Structure
- 6(f) Boundaries
- Existing Commercial Land Use
- XXXX \* 2040 Daily Traffic Volumes
- XXXX Existing MnDOT Daily Traffic Volumes

0 700 Feet

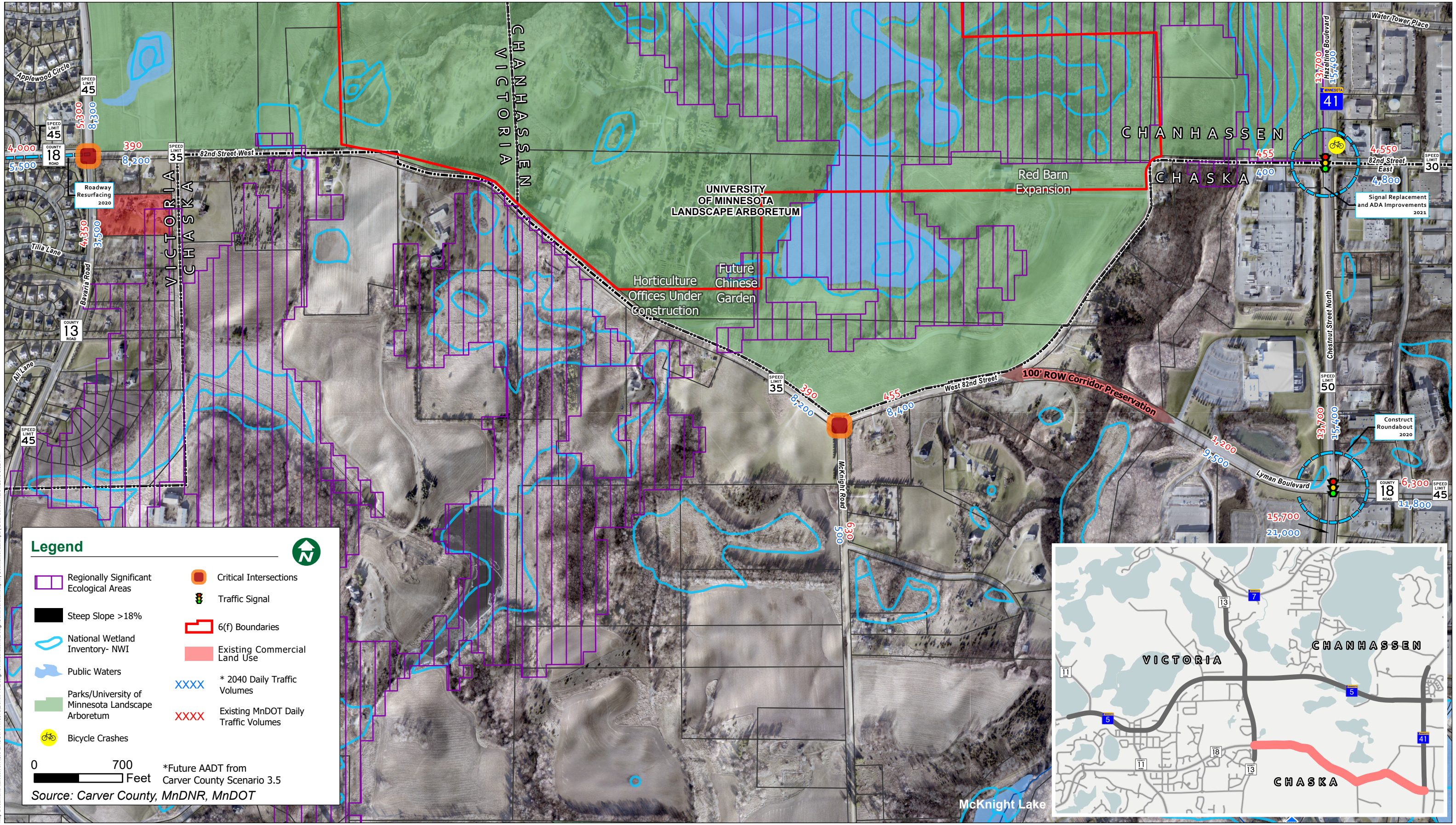
\*Future AADT from Carver County Scenario 3.5

Source: Carver County, MnDNR, MnDOT



Map Document: \\arscserver1\GIS\CAD\14118370E\SRI\Pro\Design\Considerations\DesignConsiderations.aprx | User: aaronpa | Date Saved: 11/15/2019 11:14 AM





**Legend**

- Regionally Significant Ecological Areas
- Steep Slope >18%
- National Wetland Inventory- NWI
- Public Waters
- Parks/University of Minnesota Landscape Arboretum
- Bicycle Crashes
- Critical Intersections
- Traffic Signal
- 6(f) Boundaries
- Existing Commercial Land Use
- \* 2040 Daily Traffic Volumes
- Existing MnDOT Daily Traffic Volumes

0 700 Feet  
\*Future AADT from Carver County Scenario 3.5  
Source: Carver County, MnDNR, MnDOT



Map Document: \\arbor\env\GIS\CACOT14118370E\SRV\Pro\DesignConsiderations\DesignConsiderations.aprx | User: aaronpa | Date Saved: 10/31/2019 5:52 PM





**Legend**

Regionally Significant Ecological Areas	Traffic Signal
100 yr Floodzone	Place of Worship
Steep Slope >18%	Property Considered Eligible for Historic Preservation
National Wetland Inventory- NWI	6(f) Boundaries
Public Waters	* 2040 Daily Traffic Volumes
Parks/University of Minnesota Landscape Arboretum	Existing MnDOT Daily Traffic Volumes
Critical Intersections	

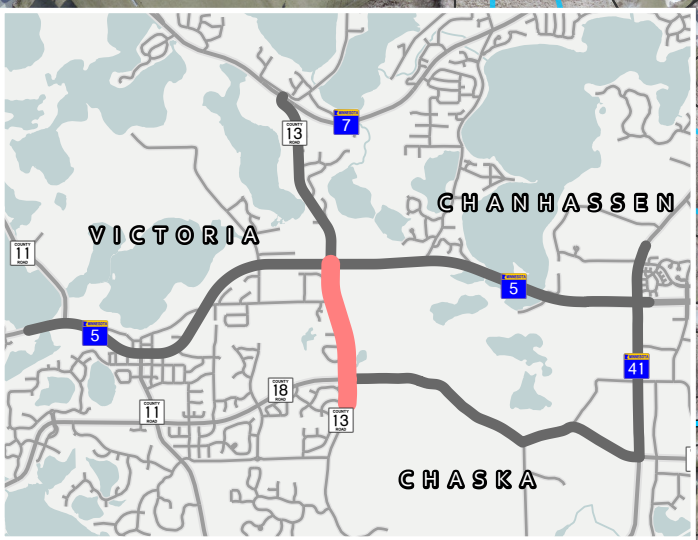
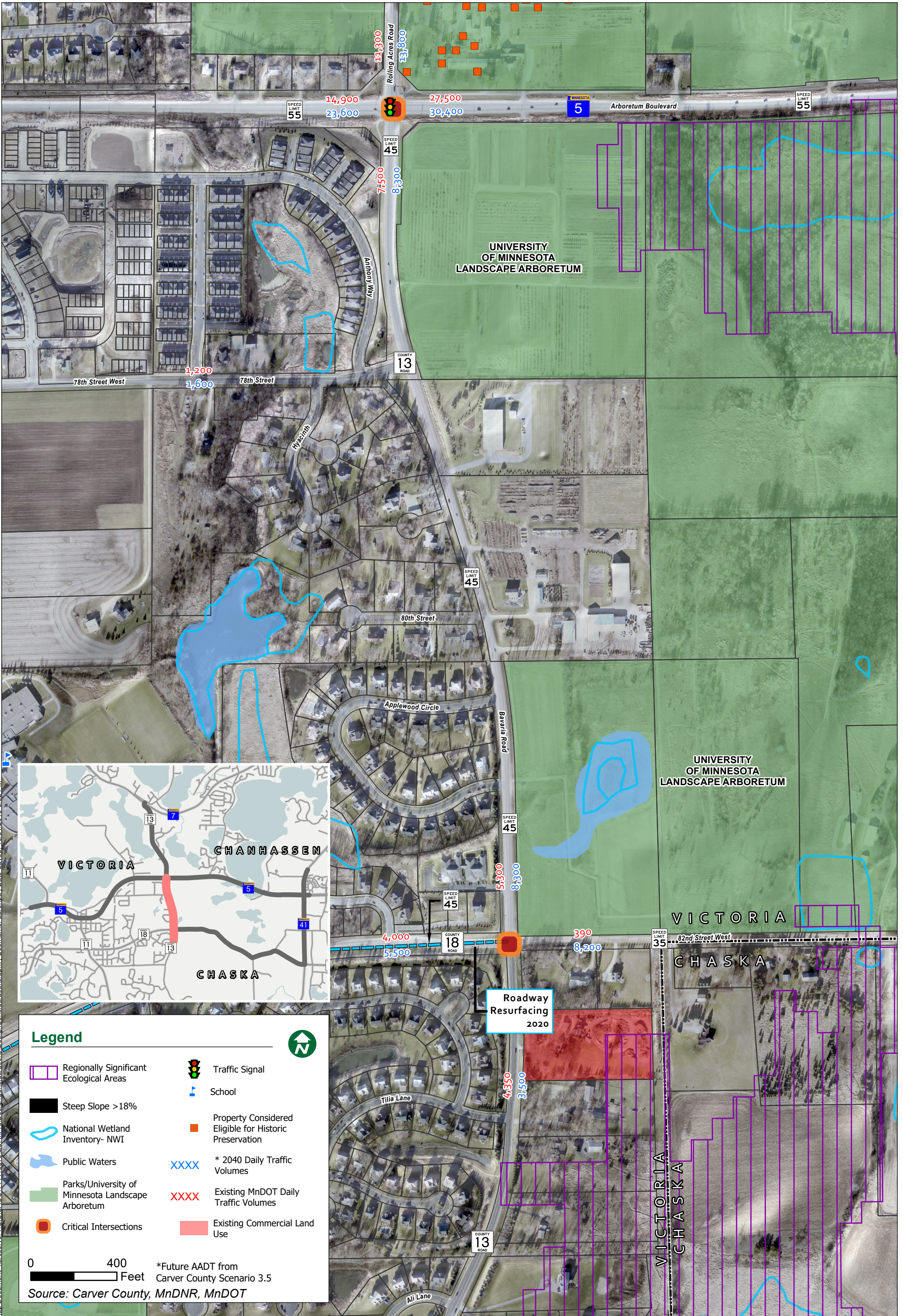
0 500 Feet

\*Future AADT from Carver County Scenario 3.5

Source: Carver County, MnDNR, MnDOT

Map Document: \\arsarserver1\GIS\CAC\144118370\ESRI\Proj\DesignConsiderations.aprx | User: aaronpa | Date Saved: 10/31/2019 5:52 PM





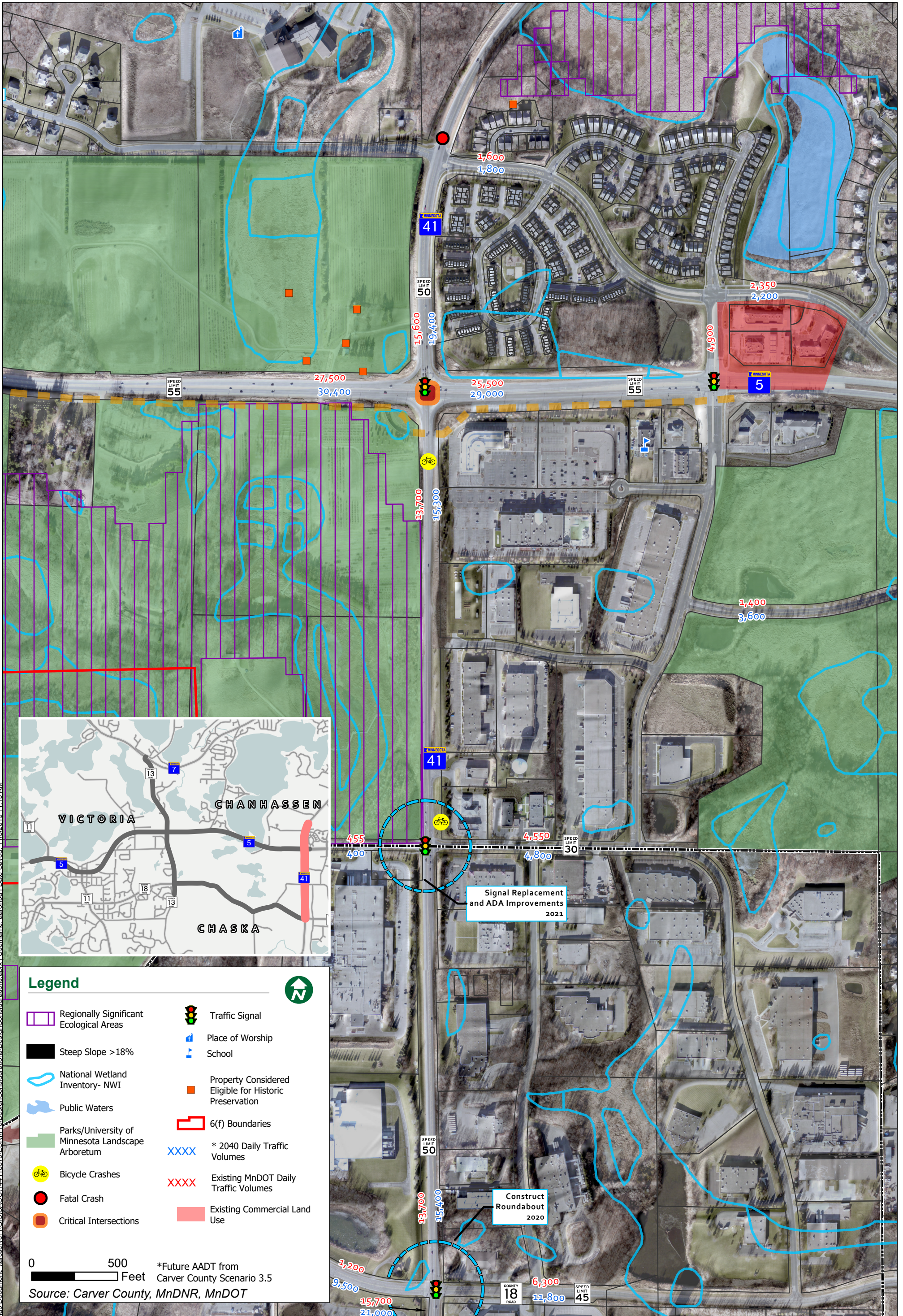
**Legend**

Regionally Significant Ecological Areas	Traffic Signal
Steep Slope >18%	School
National Wetland Inventory- NWI	Property Considered Eligible for Historic Preservation
Public Waters	* 2040 Daily Traffic Volumes
Parks/University of Minnesota Landscape Arboretum	Existing MnDOT Daily Traffic Volumes
Critical Intersections	Existing Commercial Land Use

0 400 Feet  
\*Future AADT from Carver County Scenario 3.5  
Source: Carver County, MnDNR, MnDOT

Map Document: \\arseserver\GIS\CAC\0144118370\ESRI\Proj\DesignConsiderations.aprx | Username: aaronma | Date Saved: 10/31/2019 5:52 PM





Map Document: \\arscarver\1\GIS\CAC0144118370\ESRI\Proj\DesignConsiderations\DesignConsiderations.aprx | User: aaronma | Date Saved: 11/15/2019 11:19 AM